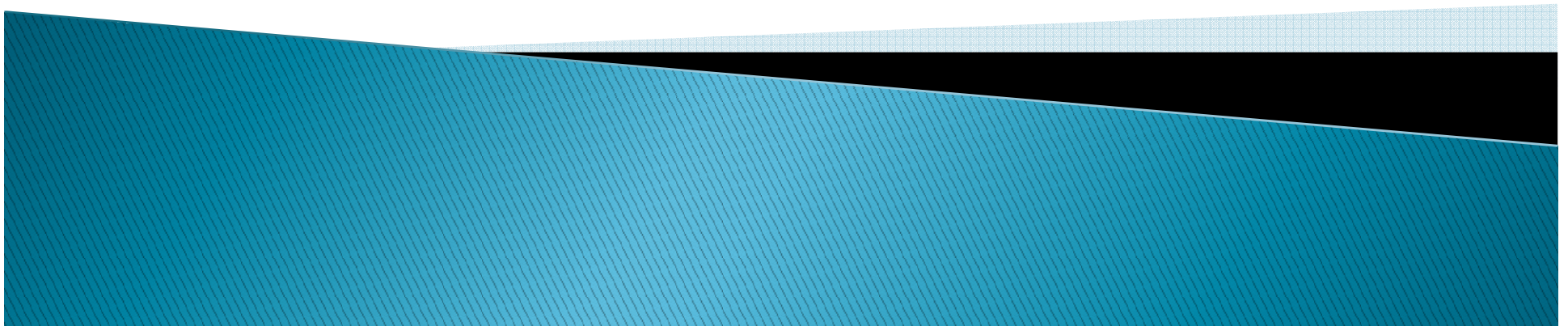


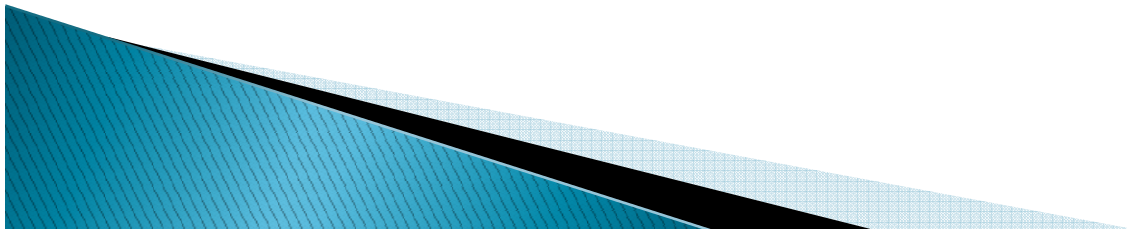
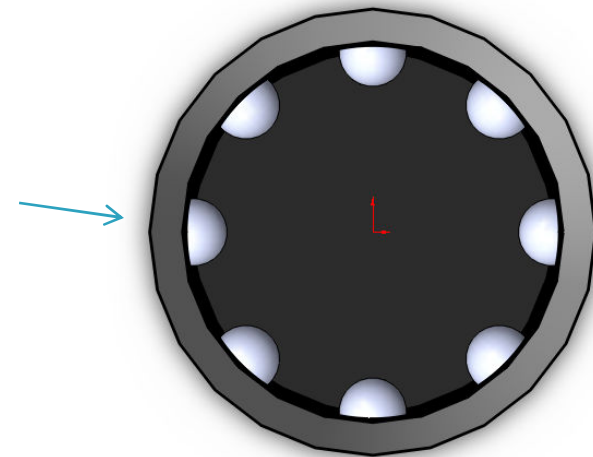
Orthographic Projection

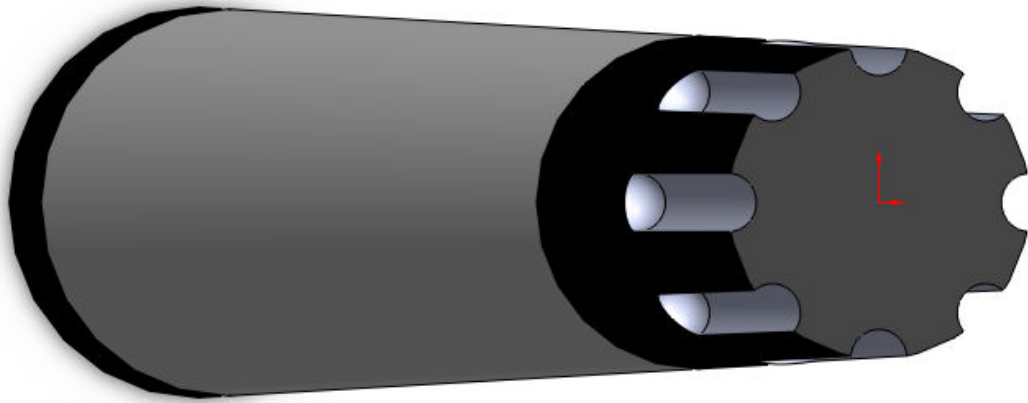
Circular Surfaces



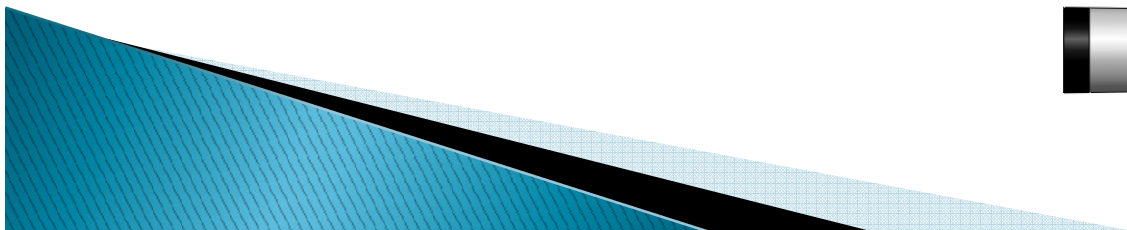
Circular Surfaces

- ▶ Circular surfaces should be treated similar to inclined surfaces.
- ▶ They are always circular when you are **looking straight at them.**
- ▶ This is the view produced when you look in on top of a marker, you can see different circles due to its features.

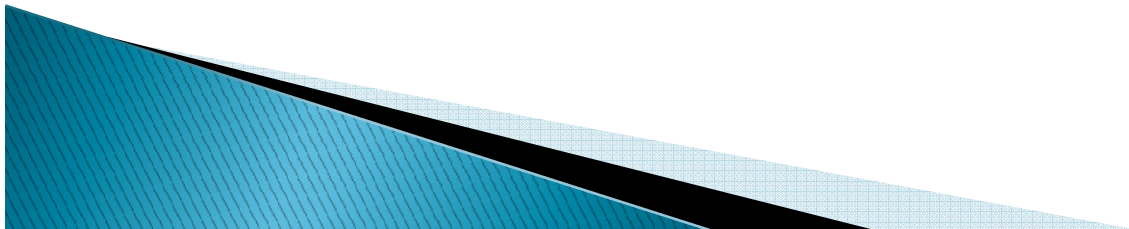




- ▶ When you look along the face of a circle, you see a straight line.



Ortho Video – Circles



Orthographic View

Actual circles seen
as **straight lines**.
(looking along the face)

Actual circles seen
as **circles**.
(looking straight at the
face)

